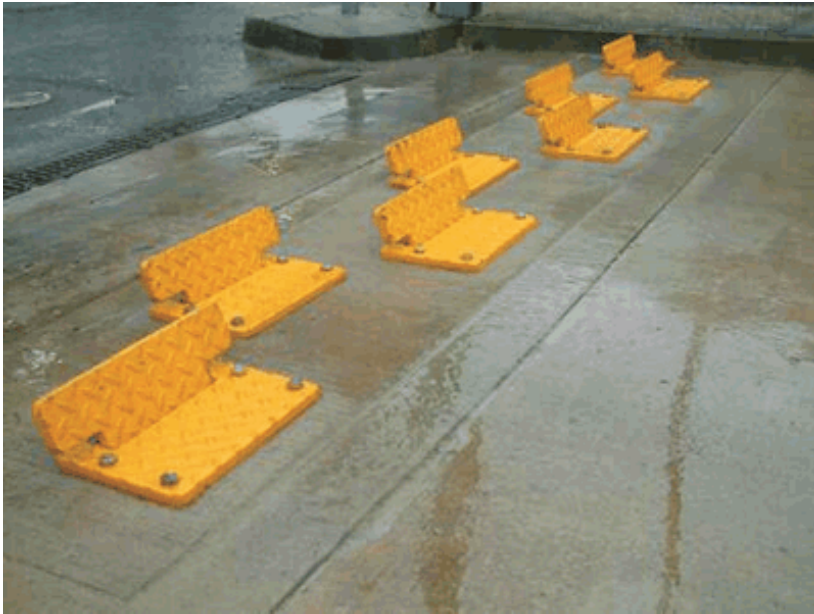


Traffic control plates can be used to cover most roadways to restrict the flow of traffic in a single direction. The unit's present a 250 mm wide 'self returning' pivoting plate against all approaching traffic.

The units should be configured in a staggered formation for maximum effect.

Each unit is manufactured in 'durbar' steel, finished in yellow as standard and manufactured to the British quality standard ISO 9002.

The countersunk version of the flow plate is suitable for use for HGV traffic flows.



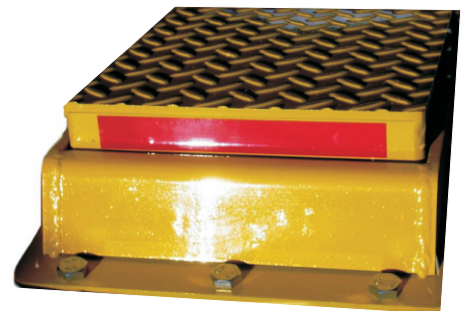
**Floor mounted version in situ.**



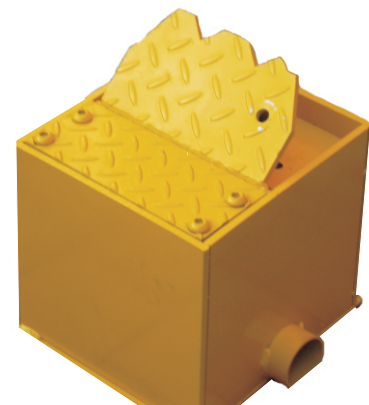
**Close up of floor mounted traffic control flow plate.**

**Recommendations:**

- The Product should be used in conjunction with correct signage.
- On-coming traffic should meet the plates at no more than a 15-degree angle.
- Adequate illumination should be provided.
- Finished in 'high visibility' yellow.



**Surface mounted version**



**Countersunk version**